



"...the only port of call you'll ever need..."

Capstans

Mounted in a vertical position on deck



A capstan is mounted in a vertical position on deck. The warping head is driven by an electric or hydraulic motor. The torque-transmitting gear is housed in the warping head and the motor is located below deck. The necessary capacity results from the nominal rope pull and the related rope speed.

Upon special request, the motor can be completely housed in the warping head.

Capstan Product Specification

Pull Load (Ton)	Warping Head Dia. D (mm)	Line Speed (M/min)	Line Size Dia. (mm)		Dimensions (mm)			Power (kW)	
			Wire Rope	Hawser Synthetic Rope	H	A	B	Hydraulic Driven	Electric Driven
1	250	18	14	30	250	320	370	5.5	4
2	300	15	16	36	300	400	450	7.5	5.5
3	350	12	20	42	360	440	480	11	7.5
5	410	12	25	50	430	530	622	15	11
8	530	10	32	65	445	670	800	22	15
10/12	630	10	38	78	530	800	950	30	22
15	720	8	44	90	640	944	1120	37	30
20/25	810	8	50	100	730	1060	1310	55	37

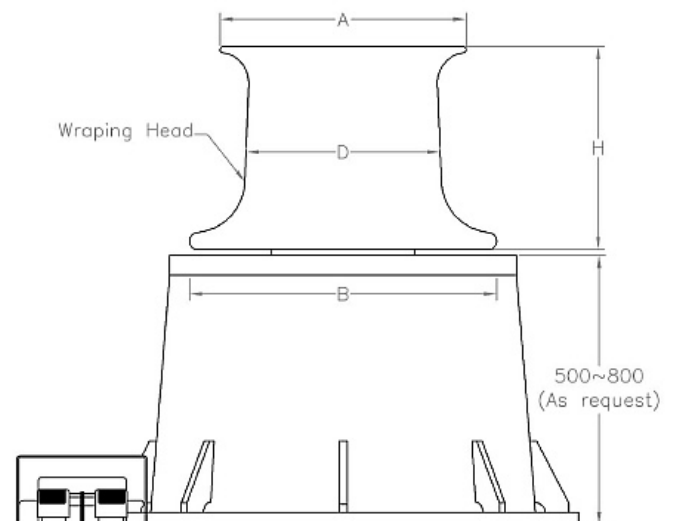
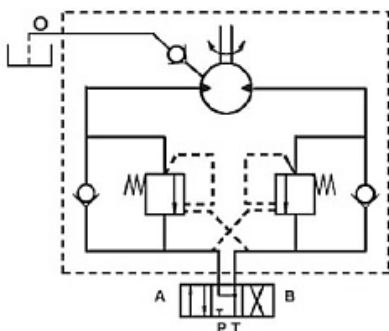
Hydraulic Driven (CH)

1. Hydraulic Motor with Counter Balance Valve
2. Planetary Gear Box
3. Control: Foot pedal, Joystick or Remote
4. Bi-Direction with Emergency Stop
5. Option: Variable Speed
6. Hydraulic Power Unit (on request)

Remark:

Warping Head ISO-3482
Base Height approx. 500 - 800mm (as request)

Hydraulic Schematic Drawing



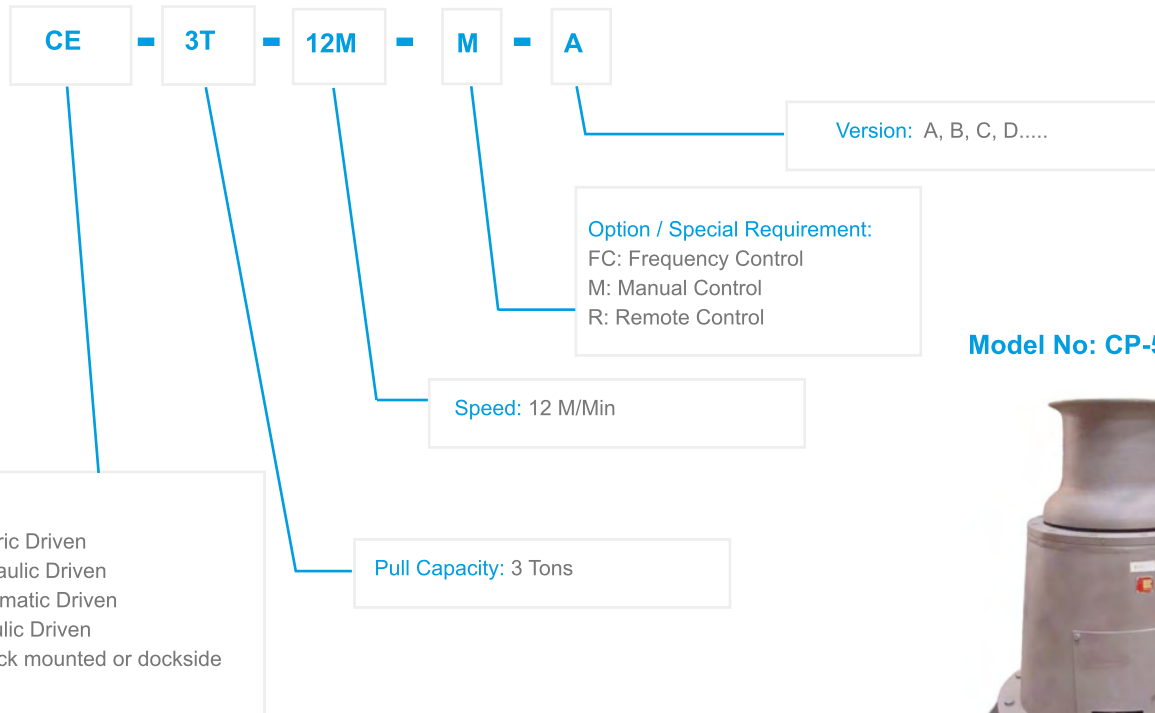


"...the only port of call you'll ever need..."

Capstans

Arrangement Diagram

Arrangement




Model No: CE-L-10TX25M-M



Model No: CP-5TX10M



Electric Driven (CE, CE-L)

1. Electric Magnetic Disc Brake - Failsafe
2. Electric Motor: IP56 or 
3. Planetary Gear Box
4. Control Panel: Foot Pedal, Joystick or Remote
5. Bi-Direction with Emergency Stop
5. Option: Variable Speed by Frequency Invertor Control