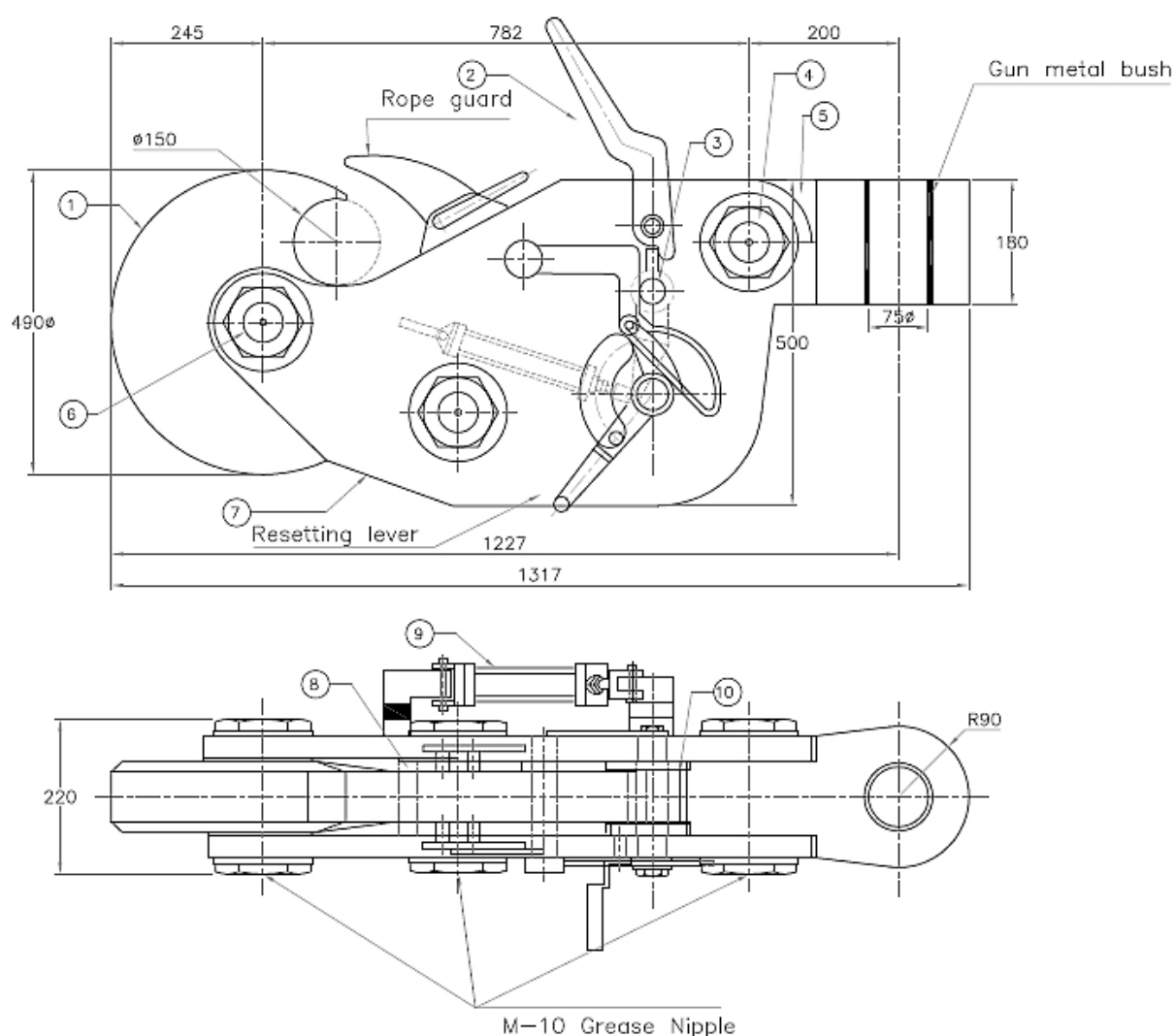


"...the only port of call you'll ever need..."

## Capstan Towing Hook

25 Tonne with Pneumatic Quick Release Mechanism - LMS210154



**Si No: Description**

- |   |                        |
|---|------------------------|
| 1 | Hook                   |
| 2 | Release Lever (Manual) |
| 3 | Release Pin            |
| 4 | Swivel Pin             |
| 5 | Swivel                 |

**Si No: Description**

- |    |                    |
|----|--------------------|
| 6  | Hook Pin           |
| 7  | Cheek Plate        |
| 8  | Locking Cam        |
| 9  | Pneumatic Cylinder |
| 10 | Main Lock          |

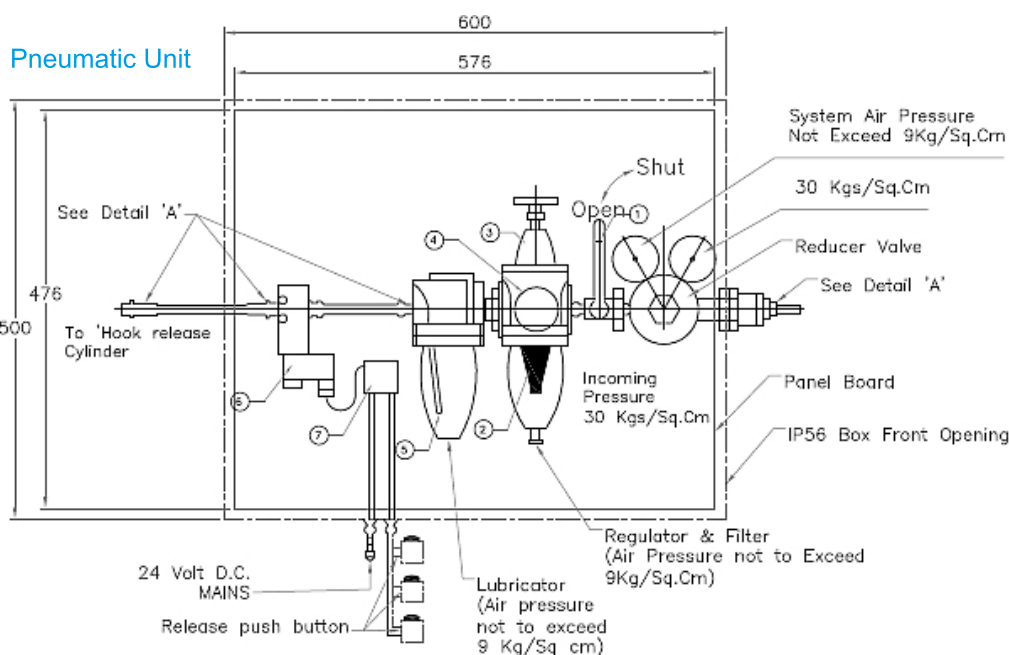
All Dimensions in Millimeters

[www.liftingandmarine.com](http://www.liftingandmarine.com)

"...the only port of call you'll ever need..."

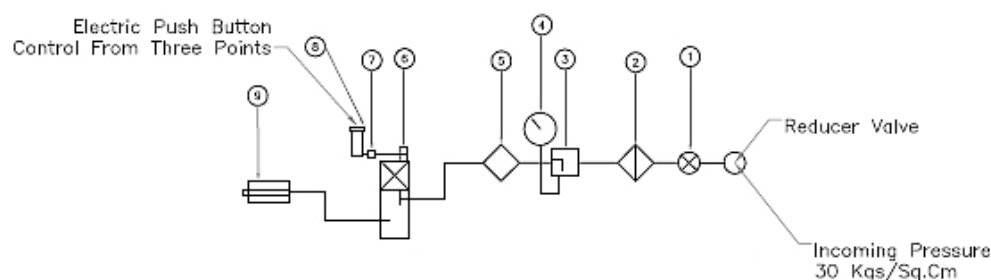
## Capstan Towing Hook

25 Tonne with Pneumatic Quick Release Mechanism - LMS210154

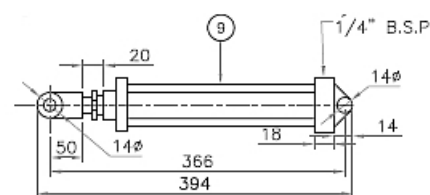


Si No:	Description	Qty:
1	Shut off valve	1
2	Filter	1
3	Regulator	1
4	Pressure Gauge	1
5	Lubricator	1
6	Solenoid Valve	1
7	Junction Box	1
8	Electric Push Button	3
9	Pneumatic Cylinder	1

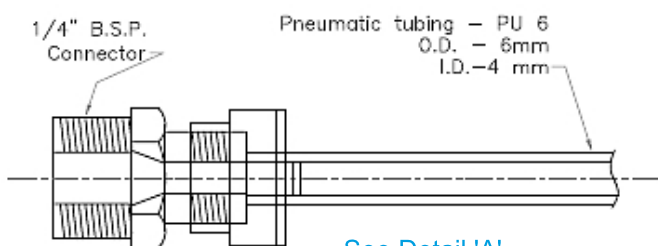
### Pneumatic Circuit Diagram



### Single Acting Pneumatic Cylinder



Si No:	Description
1	Nominal Bore - 40
2	Rod diameter - 22
3	Stroke - 100mm
4	Max. pressure - 10 Kgf/Sq.cm
5	Spring Return
6	Material - Stainless Steel



All Dimensions in Millimeters