

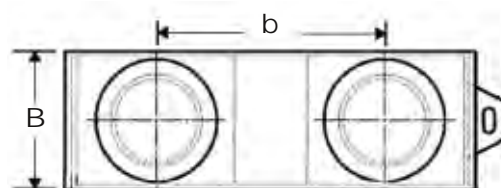
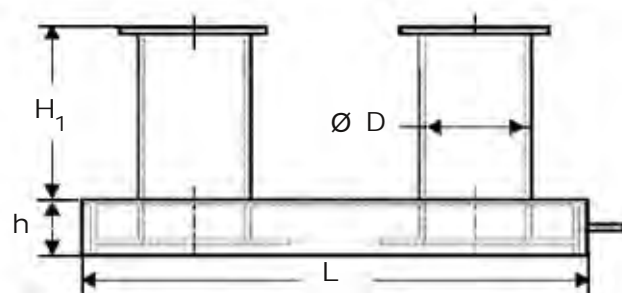
*"...the only port of call you'll ever need..."*

## Double Bollard Range

Double bollards from Lifting & Marine Services Limited are fabricated and can operate to a rope breaking load of up to 160 tonnes

The fabricated construction is based around two steel tubes which are fitted directly into a reinforced steel base - this means that the finished unit can be easily surface mounted to a deck or mooring.

Please refer to the technical data table below. To receive a competitive quotation please send us your email enquiry to us today at [sales@liftingandmarine.com](mailto:sales@liftingandmarine.com)



### Technical Schematics :

**Note:**

Technical data is for guidance only - for exact specification, please contact our sales team

Nominal Dia (mm)	D	H1	Dimensions in mm			H	Max BL of rope (ton)	Mass (kgs)
			b	B	L			
100	114	150	250	165	445	50	3	19
125	139	190	315	195	540	60	4	29
160	165	250	400	225	670	70	5	45
200	216	300	500	290	860	85	8	80
250	267	380	630	360	1065	100	12	139
315	318	480	800	430	1300	125	20	261
355	355	530	890	480	1475	145	26	361
400	406	600	1000	550	1630	160	32	502
450	457	680	1130	620	1840	170	39	685
500	508	750	1250	690	2040	190	46	911
560	558	830	1380	750	2240	210	56	1208
630	609	940	1570	820	2510	225	70	1600
710	711	1050	1750	960	2840	260	82	2252
800	812	1200	2000	1100	3240	295	100	3071



Please note that our bollards can be certified by all the major classification societies.  
Please e-mail us at [sales@liftingandmarine.com](mailto:sales@liftingandmarine.com) with your enquiry