

"...the only port of call you'll ever need..."

LMS 40

Swivel Head Anchor Fairlead

Utilising a deck mounted, balanced weight, single roller design, our swivel head fairleads are a long life solution for ship deck applications.

Manufactured from high quality steel and supplied with a primer painted finished, the fairlead is prepared ready for immediate vessel installation.

Please refer to the technical data table below. To receive a competitive quotation please send us your email enquiry to us today at sales@liftingandmarine.com



Technical Schematics :

Note:

Technical data is for guidance only - for exact specification, please contact our sales team

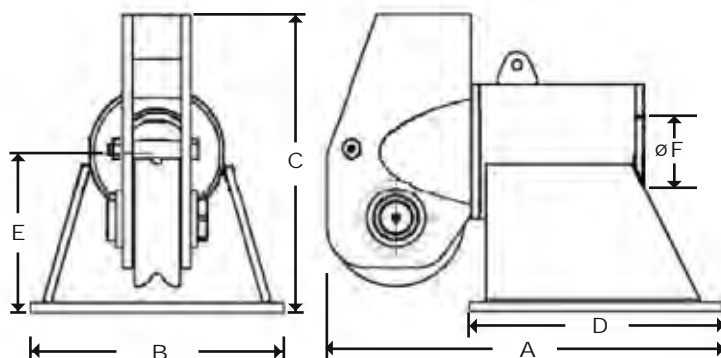
Wire Rope Dia. (mm)	Sheave Dia(mm)	Dimensions in mm	Mass (kgs)
(inch)		A B C D E F	
19	3/4	210 627 406 511 405 279 114	122
25	1	254 756 489 625 491 343 143	225
32	1 - 1/4	305 790 480 735 400 375 180	380
38	1 - 1/2	424 1220 782 921 782 495 205	941
44	1 - 3/4	508 1201 724 1156 614 597 241	953
50	2	610 1343 762 1138 756 648 305	1202
57	2 - 1/4	632 1515 1022 1543 769 800 330	2177
64	2 - 1/2	762 1670 1016 1784 769 921 368	2722
76	3	1012 2335 1400 1822 1300 970 410	6300

Note:

Wire rope at 90° wrap on sheave and 360° rotation of swivel head.
Enable anchor line to pass through with Splice Eye.

Optional:

1. Tail Sheave / Tail Roller as requested
2. Bolt mounted



Please note that our anchors can be certified by all the major classification societies.
Please e-mail us at sales@liftingandmarine.com with your enquiry

www.liftingandmarine.com