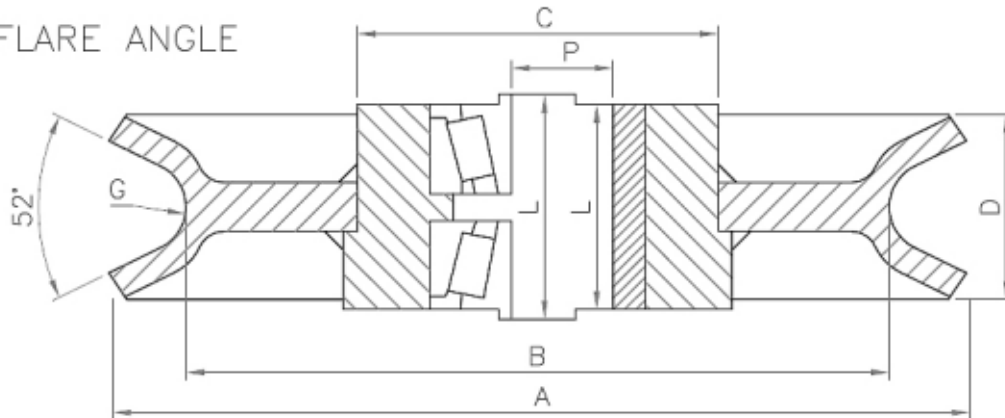




Marine Sheaves

52° FLARE ANGLE



Technical Schematics :

Sheave O/D Ins	Rope Dia mm	A	B	Nominal D	G	C	Bush L	P	Taper Roller Bearings			Nominal Wt (Kg)
									C	L	P	
6	8 - 10	152	136	28	5.5	51	31	25.4	75	34.92	25.4	1
6	12 - 14	152	128	29	7.5	51	31	25.4	75	34.92	25.4	1
6	14 - 16	152	128	29	8.5	51	31	25.4	75	34.92	25.4	1
6	17 - 19	152	118	36	10	51	38	25.4	75	34.92	25.4	1
6	20 - 22	154	120	39	11.5	90	44	63.5	90	46.02	34.92	2.5
8	10 - 12	203	183	29	6.5	51	31	25.4	75	34.92	25.4	2
8	14 - 16	203	179	30	8.5	51	31	25.4	75	34.92	25.4	2
8	14 - 16	203	175	38	8.5	51	41	25.4	75	44.45	25.4	2
8	16 - 18	203	175	38	9.5	51	41	25.4	90	44.45	34.92	2
8	20 - 22	203	167	39	11.5	70	41	34.92	90	44.45	34.92	2.5
8	20 - 22	203	167	42	11.5	90	44	63.5	90	46.02	34.92	3.5
8	20 - 22	203	165	54	11.5	100	57	63.5	100	60.32	38.1	4.5
8	28 - 30	203	152	57	15.5	115	63	76.2	115	66.67	50.8	5.5
10	16 - 18	254	222	40	9.5	70	51	34.92	90	53.97	34.92	4.5
10	20 - 22	254	216	40	11.5	70	51	34.92	90	53.97	34.92	4.5
10	20 - 22	254	216	42	11.5	90	44	63.5	90	46.02	34.92	4.5
10	28 - 30	254	222	44	15.5	115	63	76.2	115	66.67	50.08	8.5
12	20 - 22	305	265	51	11.5	80	64	44.45	90	69.85	34.92	7
12	20 - 22	305	264	42	11.5	80	64	44.45	90	52.39	34.92	7
12	24 - 26	305	257	49	13.5	80	64	44.45	106	69.85	38.1	8
12	24 - 26	305	257	49	13.5	80	64	44.45	106	53.97	38.1	8
12	28 - 30	305	357	49	15.5	80	64	44.45	106	53.97	38.1	8
14	20 - 22	357	313	45	11.5	80	64	44.45	106	69.85	38.1	10
14	24 - 26	357	313	47	13.5	80	64	44.45	106	69.85	38.1	10
14	28 - 30	357	309	52	15.5	80	64	44.45	106	69.85	38.1	10
16	24 - 26	406	362	50	13.5	112	76	63.5	106	69.85	38.1	19
16	28 - 30	406	362	52	15.5	112	76	63.5	106	79.37	38.1	19
16	32 - 35	406	342	67	18.5	112	76	63.5	127	79.37	50.8	20
16	32 - 35	406	342	67	18.5	112	76	63.5	155	73	63.5	20
18	32 - 35	457	393	67	18.5	112	76	63.5	127	79.37	50.8	24
20	35 - 38	508	448	67	20	127	82	69.85	155	85.72	63.5	29