

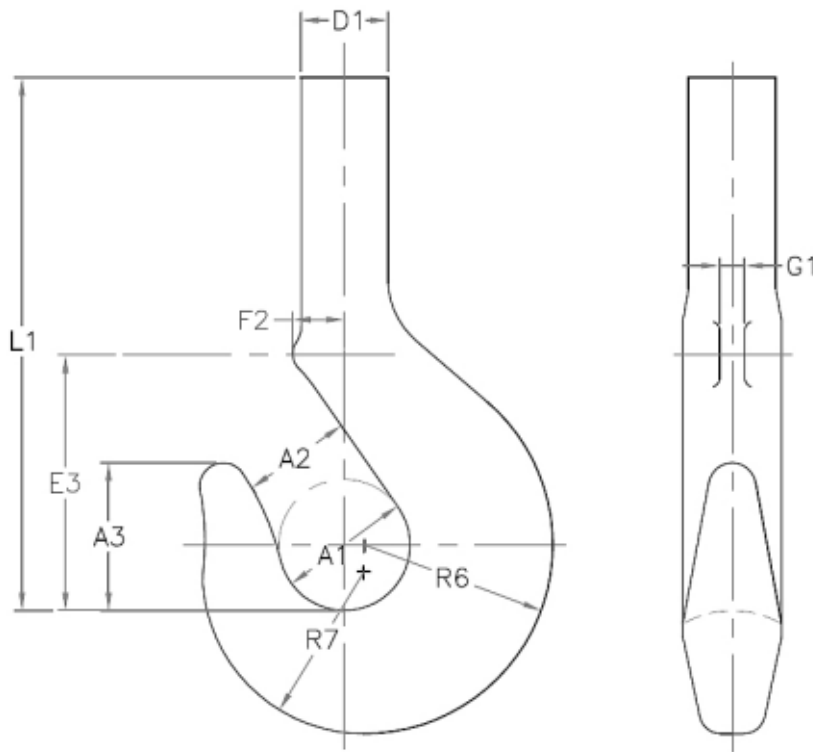


"...the only port of call you'll ever need..."

Point Hooks DIN 15401



Technical Schematics :



Hook No:	mm A1	mm A2	mm A3	mm D1	mm E3	mm F2	mm G1	mm L1	mm R6	mm R7	Weight Kg
20	160	125	180	106	330	68	33	665	232	200	112
25	180	140	202	118	360	74	38	735	262	224	160
32	200	160	225	132	400	80	38	810	292	250	220
40	224	180	252	150	447	93	42	905	326	280	310
50	250	200	285	170	485	100	42	990	363	315	430
63	280	224	320	190	550	108	45	1120	408	355	600
80	315	250	358	212	598	113	45	1270	460	400	860
100	355	280	402	236	688	130	50	1415	516	450	1220
125	400	315	450	265	750	138	50	1590	579	500	1740
160	450	355	505	300	825	147	55	1790	654	560	2480
200	500	400	565	335	900	154	55	2048	729	630	3420
250	560	450	635	375	980	164	60	2305	815	710	4800

Please advise if safety catches are required. Alternative shank lengths forged to your specification.

Please e-mail us at enquiries@liftingandmarine.com with your enquiry

www.liftingandmarine.com