

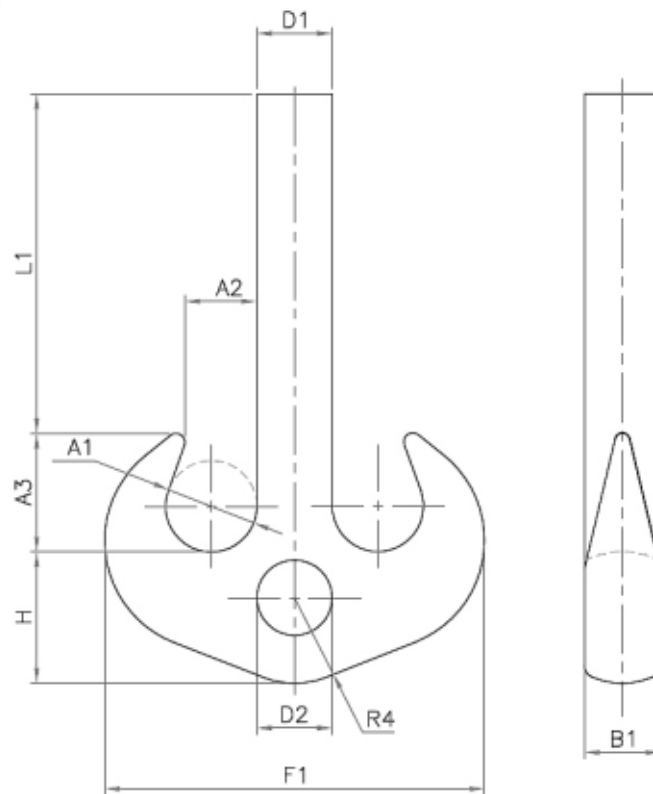


"...the only port of call you'll ever need..."

## Ramshorn Hooks DIN 15402B



### Technical Schematics :



Hook No:	mm A1	mm A2	mm A3	mm B1	mm D1	mm D2	mm F1	mm H	mm L1	mm R4	Weight Kg
20	125	100	163	106	106	96	531	190	650	118	115
25	140	112	182	118	118	106	598	212	715	132	180
32	160	125	205	132	132	116	672	236	790	150	228
40	180	140	230	150	150	131	754	265	885	170	330
50	200	160	260	170	170	146	842	300	965	190	458
63	224	180	292	190	190	168	944	335	1090	212	638
80	250	200	325	212	212	188	1062	375	1235	236	892
100	280	224	364	236	236	208	1185	425	1375	265	1248
125	315	250	408	265	265	235	1330	475	1550	300	1757
160	355	280	458	300	300	260	1505	530	1745	335	2500
200	400	315	515	335	335	282	1685	600	1960	375	3560
250	450	355	580	375	375	312	1885	670	2210	425	5033

Please advise if safety catches are required. Alternative shank lengths forged to your specification.

Please e-mail us at [enquires@liftingandmarine.com](mailto:enquires@liftingandmarine.com) with your enquiry

[www.liftingandmarine.com](http://www.liftingandmarine.com)