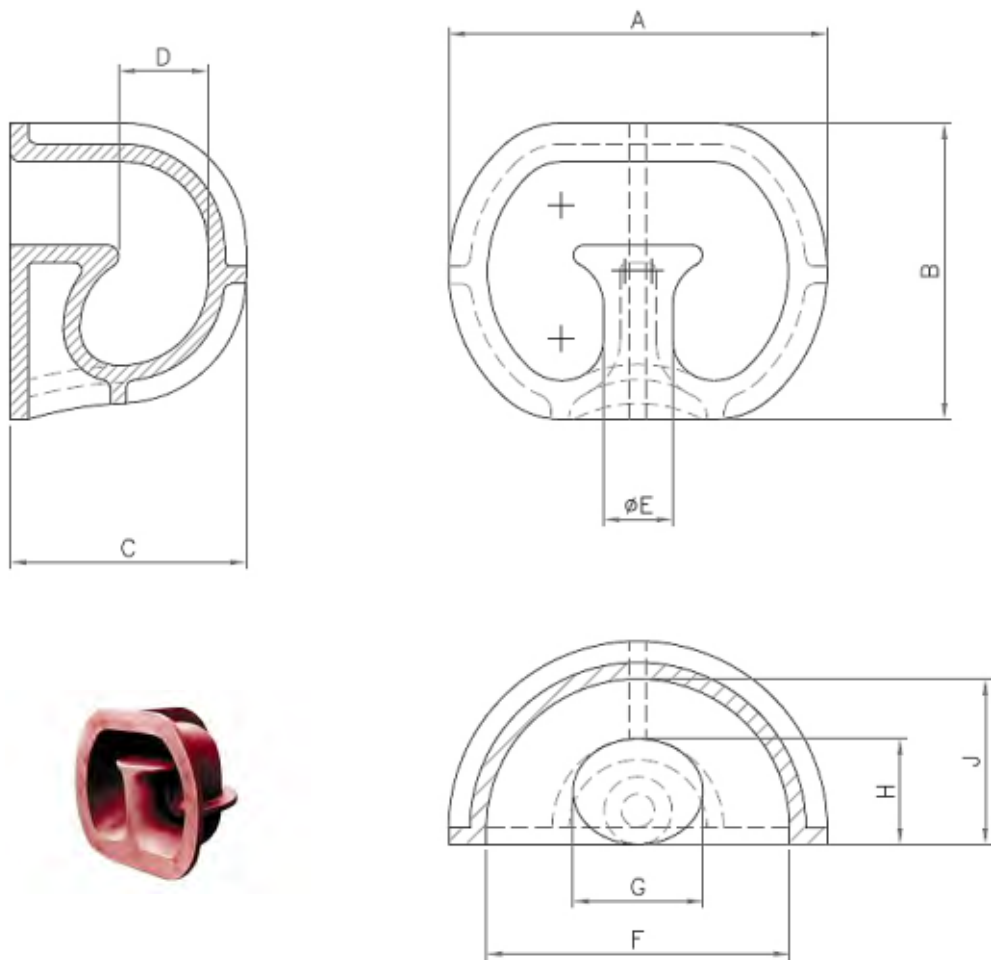




"...the only port of call you'll ever need..."

Recessed Shell Bitts

Recessed shell bitts are manufactured to be used on vessels using the Panama and Suez Canal, or where the rope needs to be attached to a ship's hull without any protrusion.



Technical Schematics :

Note:

Technical data is for guidance only - for exact specification, please contact our sales team

Nominal Size of Bitts (tonne)	Weight Kilos	A mm	B mm	C mm	D mm	ØE mm	F mm	G mm	H mm	J mm
20	105	440	350	250	105	81	360	150	125	230
50	285	850	660	445	115	165	675	355	240	362

Please e-mail us at enquiries@liftingandmarine.com with your enquiry

www.liftingandmarine.com